

2017 ANNUAL REPORT

With Kettle Society, now we have a home to come back to.



Most people wanted to kick me to the curb and here they accepted me as a human being.

The Kettle Society

Strength through mental health

MESSAGE FROM THE KETTLE Meeting the Challenges!

Last year the Kettle Society celebrated a significant milestone - 40 years of providing mental health programs and services in the Metro Vancouver area. Thank you all for attending the celebrations, for your good wishes and for your support. We rededicated The Kettle to staying true to our roots and our mission: to being there for everyone that needs our help in the coming years.

Mental health, substance use and housing continue to be critical issues in Vancouver. The Kettle Society is playing a key role in addressing these needs and is viewed as a partner of choice. With your ongoing support, this year we increased our mental health outreach, expanded our SEED supportive employment program and kept our doors open 365 days a year.

Our goal of expanding our mental health drop-in centre and building 30 units of supportive housing on our Venables site is still front and centre. After six years of work with the community and the City of Vancouver, we remain committed to achieving this goal. Why? Because of the urgent needs of some of the most vulnerable individuals in our city. We can't thank our partner Boffo Properties enough for their steadfast dedication to this project and their continued support of Kettle members and programs.

The Kettle Board of Directors has worked tirelessly on a new Strategic Plan that will guide our work over the next four years. The Board is striving to ensure the Kettle Society's long-term sustainability as a key service provider within the sector, while maintaining the legacy of the organization's person-centered service delivery model. We are aiming high with our goals so that we can meet the evolving needs of our current and future clients.

An extremely bright note at The Kettle is our collaboration with Vancouver Opera. Kettle clients, tenants and staff are coming together weekly as a Choir and a writing group to prepare for the chamber opera *Requiem for a Lost Girl* by Marcel Bergman with story by Onalea Gilbertson. The opera addresses stigma around poverty, homelessness and mental illness and will be premiered at the Vancouver Opera Festival in May 2018. It is so joyful to hear singing and music throughout our Kettle buildings!

Thank you to our volunteers, donors, employees, partners and the community for your support. We remain humble and grateful to you all.



Lisa Dominato
Board Chair



Nancy Keough
Executive Director

**Supporting people with mental illness to lead
healthier lives.**

STRENGTH THROUGH MENTAL HEALTH



Downtown Eastside Connect



Kettle Clean Team – New Jackets



Paws for Hope - Free Vet Day



Bell Let's Talk Day



Italian Day with Boffo Properties



Homeless Count



Art Against Stigma



Art Against Stigma



Gifts from Marsh Insurance



Holiday Lunch in Drop-in



Happy 40th Birthday!



Thanks for the socks!

THE YEAR IN PHOTOS

Who We Are ...

Over 5,000 vulnerable individuals living with mental illness in Metro Vancouver rely on The Kettle Society for housing, employment, programs and services so that they can have what many of us take for granted – improved mental health, a better life, and most importantly, hope.

For over 40 years, The Kettle has lent a hand to those in need – from a safe place to hang out, a cup of coffee, a hearty lunch, to friendship and acceptance.

Our philosophy of service has never changed. We meet people wherever they are on their journey; offering support, advocating, and working with individuals to help find the assistance they need to overcome the challenges in their lives.



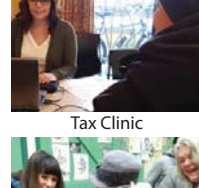
Taylor Manor New Garden



Telus at Kettle on Burrard



Fresh Start Team



Tax Clinic



Warm 'Em Up Day

Mental Health Drop-In & Homeless Outreach

Services 150 people a day, 365 days a year. Provides hot meals – 26,000 a year, plus clothing, support and friendship. The drop-in has a separate women's space, and provides 27 programs and activities, as well as homeless outreach to the community.

Mental Health Outreach & Legal Advocacy Services

Supports over 1,500 individuals a year with the challenges they face, including poverty, housing, health issues, income security, taxes, child apprehension, and tenancy issues.

The Kettle Housing Program

Provides 400 tenants with affordable housing. There is a strong emphasis on psycho-social rehabilitation principles and the harm reduction model to assist tenants. Our goal is to create safe, stable homes where people can begin to develop independence and start to explore opportunities for a better future.

Peggy's Place Transition House & Camille House

Special care for women living with mental health and addiction challenges. We support women to reach their life goals in a supportive and caring environment.

The Kettle Choir

An historic collaboration between Vancouver Opera and The Kettle, leading up to a new production for 2018 - *Requiem for a Lost Girl*, an opera that explores themes of poverty, mental illness and addiction.



In the Studio



1st Choir CD



Choir, with Director Lesley Sutherland



The Kettle's annual fundraiser, featuring TSN's Michael Landsberg & Tamara Taggart, CTV News Anchor as Emcee.



Michael Landsberg



Tamara Taggart



Michael Landsberg with Choir Members

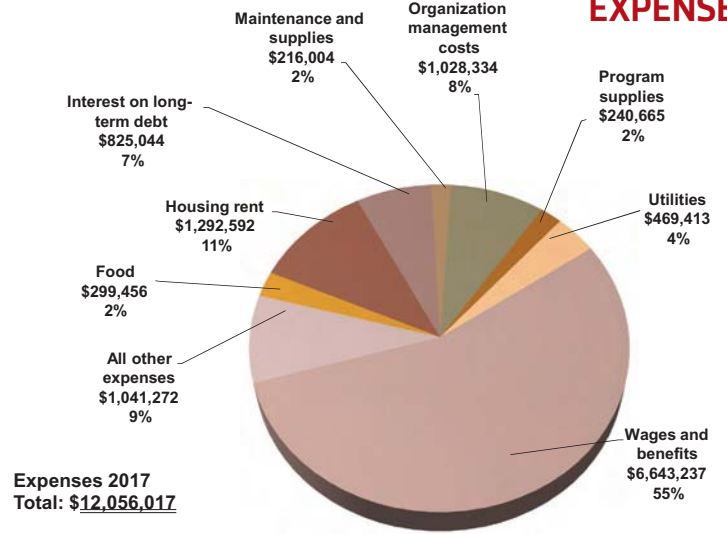
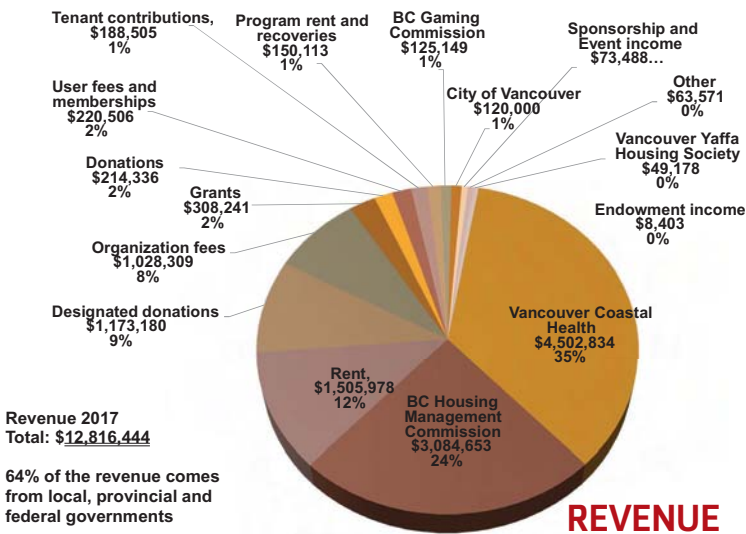


Making a Difference Evening

Supporting people with mental illness to lead healthier lives.

THE KETTLE FINANCIALS 2016-17

EXPENSES



CAN YOU HELP?

We urgently need your help to provide housing, employment, advocacy and support services for some of our society's most vulnerable.



100% my life is different today because of The Kettle.

DONATE ONLINE TODAY!

www.TheKettle.ca

Like us on Facebook!
Follow us on Twitter!



The Kettle Society
1725 Venables St.
Vancouver, V5L 2H3
T: 604-251-2801
F: 604-251-6354
info@thekettle.ca

Charitable No.
119240356 RR0001

THANK YOU TO OUR FUNDERS AND COMMUNITY PARTNERS



We also express our appreciation to all the individuals who donated to and volunteered at the Kettle last year!

Supporting people with mental illness to lead healthier lives.